

TECHNICAL MANUAL

**ORGANIZATIONAL, DIRECT SUPPORT, AND
GENERAL SUPPORT MAINTENANCE
REPAIR PARTS AND SPECIAL TOOLS LIST
(INCLUDING DEPOT MAINTENANCE REPAIR PARTS AND
SPECIAL TOOLS)**

**COMPRESSOR UNIT, RECIPROCATING,
ELECTRIC MOTOR DRIVEN, 5 CFM
175 PSI, MODEL 50-6715
NSN 4310-01-089-4330**

**This copy is a reprint which includes current
pages from Changes 1 and 2.**

Approved for public release; distribution is unlimited.

***This manual supersedes TM 5-4310-370-24P, dated 5 November 1981.**

**HEADQUARTERS, DEPARTMENT OF THE ARMY
28 AUGUST 1989**

CHANGE

NO. 2

HEADQUARTERS
DEPARTMENT OF THE ARMY
WASHINGTON, D.C., 30 June 1993Organizational, Direct Support, and General Support
Maintenance Repair Parts and Special Tools List
(Including Depot Maintenance Repair Parts and Special Tools)COMPRESSOR UNIT, RECIPROCATING,
ELECTRIC MOTOR DRIVEN, 5 CFM
175 PSI, MODEL 50-6715
NSN 4310-01-089-4330

DISTRIBUTION STATEMENT A: Approved for public release; distribution is unlimited

TM 5-4310-370-24P, 28 August 1989, is changed as follows:

1. Remove and insert pages as indicated below. New or changed text material is indicated by a vertical bar in the margin. An illustration change is indicated by a miniature pointing hand.

Remove pages

8-1 and 8-2
I-1 through I-4

Insert pages

8-1 and 8-2
I-1 through I-4

2. Retain this sheet in front of manual for reference purposes.

By Order of the Secretary of the Army:

Official:

GORDON R. SULLIVAN
General, United States Army
*Chief of Staff*MILTON H. HAMILTON
Administrative Assistant to the
Secretary of the Army

DISTRIBUTION:

To be distributed in accordance with DA Form 12-25-E, block no. 0332, requirements for TM 5-4310-370-24P.

CHANGE
NO. 1

HEADQUARTERS
DEPARTMENT OF THE ARMY
WASHINGTON, D.C., 9 NOVEMBER 1992

Organizational, Direct Support, and General Support Maintenance
Repair Parts and Special Tools List
(Including Depot Maintenance Repair Parts
and Special Tools List)

**COMPRESSOR UNIT, RECIPROCATING,
ELECTRIC MOTOR DRIVEN, 5 CFM,
175 PSI, MODEL 50-6715
NSN 4310-01-089-4330**

Approved for public release; Distribution is unlimited

TM 5-4310-370-24P, 28 August 1989 is changed as follows:

1. Remove and insert pages as indicated below. New or changed text material is indicated by a vertical bar in the margin. An illustration change is indicated by a miniature pointing hand.

Remove pages

i/(ii blank)
6-1 and Fig. 7

I-1 through I-6

Insert pages

i/(ii blank)
6-1 and Fig. 6A
6A-1 and Fig. 7
I-1 through I-6
I-6.1/(I-6.2 blank)

2. Retain this sheet in front of manual for reference purposes.

By Order of the Secretary of the Army:

Official:

GORDON R. SULLIVAN
General, United States Army
Chief of Staff

MILTON H. HAMILTON
Administrative Assistant to the
Secretary of the Army
02862

DISTRIBUTION:

To be distributed in accordance with DA Form 12-25-E, block no. 0332, requirements for TM 5-4310-370-24P.

**Organizational, Direct Support, and General Support Maintenance
Repair Parts and Special Tools List
(Including Depot Maintenance Repair Parts and Special Tools)
for
COMPRESSOR UNIT, RECIPROCATING,
ELECTRIC MOTOR DRIVEN, 5 CFM
175 PSI, MODEL 50-6715
NSN 4310-01-089-4330**

Current as of 26 April 1989

REPORTING ERRORS AND RECOMMENDING IMPROVEMENTS

You can help improve this manual. If you find any mistake or if you know of a way to improve the procedures, please let us know. Mail your letter, DA Form 2028 (Recommended Changes to Publications and Blank Forms), or DA Form 2028-2 located in the back of this manual direct to: Commander, U.S. Army Troop Support Command, ATTN: AMSTR-MMTS, 4300 Goodfellow Boulevard, St. Louis, MO 63120-1798. A reply will be furnished directly to you.

Approved for public release; distribution is unlimited.

TABLE OF CONTENTS

		Page	Illust/ Figure
Section I	Introduction		
Section II.	Repair Parts List		
Group 01	Belt Guard and Related Parts		
	Belt Guard Assembly	1-1	1
	V-Belts	2-1	2
Group 02	Electric Motor and Related Parts	3-1	3
	Motor Cable Assembly	4-1	4
	Pressure Switch Cable Assembly	5-1	5
	Starter Switch.....	6-1	6
	Motor Starter	6A-1	6A
	Pressure Switch Assembly	7-1	7
Group 03	Air Compressor Assembly		
	Air Compressor Pump Assembly	8-1	8
Group 04	Air Receiver		
	Air Receiver Assembly	9-1	9
Section III.	Special Tools List (Not Applicable)		
Section IV.	Cross Reference Indexes	I-1	
	National Stock Number Index	I-1	
	Part Number Index	I-2	
	Figure and Item Number Index	I-5	

*This manual supersedes TM 5-4310-370-24P, dated 5 November 1981.

ORGANIZATIONAL, DIRECT SUPPORT, AND GENERAL SUPPORT MAINTENANCE
REPAIR PARTS AND SPECIAL TOOLS LIST
(INCLUDING DEPOT MAINTENANCE REPAIR PARTS AND SPECIAL TOOLS)

SECTION I. INTRODUCTION

1. SCOPE. This RPSTL lists and authorizes spares and repair parts; special tools; special test, measurement, and diagnostic equipment (TMDE) ; and other special support equipment required for performance organizational, direct support, general support and depot maintenance of Compressor Unit, Reciprocating, Electric Motor Driven. It authorizes the requisitioning, issue, and disposition of spares, repair parts and special tools as indicated by the source, maintenance and recoverability (SMR) codes.

2. GENERAL. In addition to this section, Introduction, this Repair Parts and Special Tools List is divided into the following sections:

a. Section II. Repair Parts List. A list of spares and repair parts authorized by this RPSTL for use in the performance of maintenance. The list also includes parts which must be removed for replacement of the authorized parts. Parts lists are composed of functional groups in ascending alphanumeric sequence, with the parts in each group listed in ascending figure and item number sequence. Bulk materials are listed in item name sequence. Repair parts kits are listed separately in their own functional group within Section II. Repair parts for repairable special tools are also listed in this section. Items listed are shown on the associated illustration(s) /figure(s).

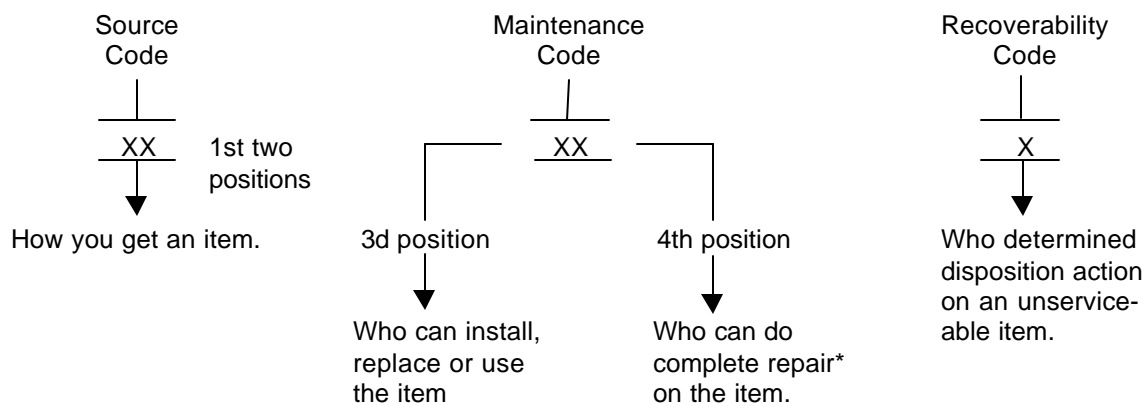
b. Section III. Special Tools List. A list of special tools, special TMDE, and other special support equipment authorized by this RPSTL (as indicated by Basis of Issue (BOI) information in DESCRIPTION AND USABLE ON CODE column) for the performance of maintenance.

c. Section IV. Cross-references Indexes. A list, in National Item Identification Number (NIIN) sequence, of all National stock numbered items appearing in the listing, followed by a list in alphanumeric sequence of all part numbers appearing in the listings. National stock numbers and part numbers are cross-referenced to each illustration figure and item number appearance. The figure and item number index lists figure and item number in alphanumeric sequence and cross-references NSN, FSCM and part number.

3. EXPLANATION OF COLUMNS (SECTIONS II AND III).

a. ITEM NO. (Column (1)). Indicates the number used to identify items called out in the illustration.

b. SMR Code (Column (2)). The Source, Maintenance, and Recoverability (SMR) code is a 5-position code containing supply/requisitioning information, maintenance category authorization criteria, and disposition instruction, as shown in the following breakout:



*Complete Repair: Maintenance capacity, capability, and authority to perform all corrective maintenance tasks of the "Repair" function in a use/user environment in order to restore serviceability to a failed item.

(1) Source Code. The source code tells you how to get an item needed for maintenance, repair, or overhaul of an end item/equipment. Explanations of source codes follows:

Code	Explanation
PA PB PC** PD PE PF PG	Stocked items; use the applicable NSN to request/requisition items with these source codes. They are authorized to the category indicated by the code entered in the 3d position of the SMR code.
	**NOTE: Items coded PC are subject to deterioration.
KD KF KB	Items with these codes are not to be requested/requisitioned individually. They are part of a kit which is authorized to the maintenance category indicated in the 3d position of the SMR code. The complete kit must be requisitioned and applied.

	Explanation
MO--(Made at org. AVUM Level MF--(Made at DS/ AVUM Level MH--(Made at GS Level) ML--Made at Specialized Repair Activity (SRA)) MD--(Made at Depot of maintenance.	Items with these codes are not to be requested/requisitioned individually. They must be made from bulk material which is identified by the part number in the DESCRIPTION and USABLE ON CODE (UOC) column and listed in the Bulk Material group of the repair parts list in this RPSTL. If the item is authorized to you by the 3d position code of the SMR code, but the source code indicates it is made at a higher level, order the item from the higher level

Explanation

AO--(Assembled by org/AVUM Level)
 AF--(Assembled by DS/AVIM Level)
 AH--(Assembled by GS Category)
 AL--(Assembled by SRA)
 AD--(Assembled by Depot)

Items with these codes are not to be requested/requisitioned individually. The parts that make up the assembled item must be requisitioned or fabricated and assembled at the level of maintenance indicated by the source code. If the 3d position code of the SMR code authorizes you to replace the item, but the source code indicates the items are assembled at a higher level, order the item from the higher level of maintenance.

Explanation

XA--Do not requisition an "XA"-coded item. Order its next higher assembly. (Also, refer to the NOTE below.)
 XB--If an "XB" item is not available from salvage, order it using the FSCM and part number given.
 XC--Installation drawing, diagram, instruction sheet, field service drawing, that is identified by manufacturer's part number.
 XD--Item is not stocked. Order an "XD"-coded item through normal supply channels using the FSCM and part number given, if no NSN is available.

NOTE

Cannibalization or controlled exchange, when authorized, may be used as a source of supply for items with the above source codes, except for those source coded "XA" or those aircraft support items restricted by requirements of AR 750-1.

(2) Maintenance Code. Maintenance codes tells you the level(s) of maintenance authorized to USE and REPAIR support items. The maintenance codes are entered in the third and fourth positions of the SMR code as follows:

- (a) The maintenance code entered in the third position tells you the lowest maintenance level authorized to remove, replace, and use an item. The maintenance code entered in the third position will indicate authorization to one of the following levels of maintenance.

Code	Application/Explanation
C	--Crew or operator maintenance done within organizational or aviation unit maintenance.
O	--Organizational or aviation unit category can remove, replace, and use the item.
F	--Direct support or aviation intermediate level can remove, replace, and use the item.

- H --General support level can remove, replace, and use the item.
- L --Specialized repair activity can remove, replace, and use the item.
- D --Depot level can remove, replace, and use the item.

(b) The maintenance code entered in the-fourth position tells whether or not the item is to be repaired and identifies. the lowest maintenance level with the capability to do complete repair (i.e., perform all authorized repair functions.) NOTE: Some limited repair may be done on the item at a lower level of maintenance, if authorized by the Maintenance Allocation Chart (MAC) and SMR codes. This position will contain one of the following maintenance codes.

Code	Application/Explanation
O	--Organizational or (aviation unit) is the lowest level that can do complete repair of the item.
F	--Direct support or aviation intermediate is the lowest level that can do complete repair of the item.
H	--General Support is the lowest level that can do complete repair of the item.
L	--Specialized repair activity is the lowest level that can do complete repair of the item.
D	--Depot is the lowest level that can do complete repair of the item.
Z	--Nonrepairable. No repair is authorized.
B	--No repair is authorized. (No parts or special tools are authorized for the maintenance of a "B" coded item). However, the item may be reconditioned by adjusting, lubricating, etc., at the user level.

(3) Recoverability Code. Recoverability codes are assigned to items to indicate the disposition action on unserviceable items. The recoverability code is entered in the fifth position of the SMR Code as follows:

Recoverability Codes	Application/Explanation
Z	--Nonrepairable item. When unserviceable, condemn and dispose of the item at the level of maintenance shown in 3d position of SMR Code.

Recoverability Codes	Application/Explanation
O	--Reparable item. When uneconomically reparable, condemn and dispose of the item at organizational or aviation unit level.
F	--Reparable item. When uneconomically reparable, condemn and dispose of the item at the direct support or aviation intermediate level.
H	--Reparable item. When uneconomically reparable, condemn and dispose of the item at the general support level.
D	--Reparable item. When beyond lower level repair capability, return to depot. Condemnation and disposal of item not authorized below depot level.
L	--Reparable item. Condemnation and disposal not authorized below specialized repair activity (SRA).
A	--Item requires special handling or condemnation procedures because of specific reasons (e.g., precious metal content, high dollar value, critical material, or hazardous material). Refer to appropriate manuals/directives for specific instructions.

c. FSCM (Column (3)). The Federal Supply Code for Manufacturer (FSCM) is a 5-digit numeric code which is used to identify the manufacturer, distributor, or Government agency, etc., that supplies the item.

d. PART NUMBER (Column (4)). Indicates the primary number used by the manufacturer, (individual, company, firm, corporation, or Government activity), which controls the design and characteristics of the item by means of its engineering drawings, specifications standards, and inspection requirements to identify an item or range of items.

NOTE

When you use an NSN to requisition an item, the item you receive may have a different part number from the part ordered.

e. DESCRIPTION AND USABLE ON CODE (UOC) (Column (5)). This column includes the following information:

- (1) The Federal item name and, when required, a minimum description to identify the item.
- (2) The physical security classification of the item is indicated by the parenthetical entry, e.g., Phy Sec C1 - Confidential, Phy Sec C1 (S) - Secret, Phy Sec C1 (T) - Top Secret.

- (3) Items that are included in kits and sets are listed below the name of the kit or set.
- (4) Spare/repair parts that make up an assembled item are listed immediately following the assembled item line entry.
- (5) Part numbers for bulk materials are referenced in this column in the line item entry for the item to be manufactured/fabricated.
- (6) When the item is not used with all serial numbers of the same model, the effective serial numbers are shown on the last line(s) of the description (before UOC).
- (7) The usable on code, when applicable (see paragraph 5, Special Information).
- (8) In the Special Tools List section, the basis of issue (BOI) appears as the last line(s) in the entry for each special tool, special TMDE, and other special support equipment. When density of equipments supported exceeds density spread indicated in the basis of issue, the total authorization is increased proportionately.
- (9) The statement "END OF FIGURE" appears just below the last item description in Column 5 for a given figure in both Section II and Section III.
- (10) The indenture, shown as dots appearing before the repair part, indicates that the item is a repair part of the next higher assembly.

f. **QTY (Column (6)).** The QTY (quantity per figure column) indicates the quantity of the item used in the breakout shown on the illustration figure, which is prepared for a functional group, subfunctional group, or an assembly. A "V" appearing in this column in lieu of a quantity indicates that the quantity is variable and may vary from application to application.

4. EXPLANATION OF COLUMNS (SECTION IV).

a. NATIONAL STOCK NUMBER (NSN) INDEX.

- (1) **STOCK NUMBER column.** This column lists the NSN by National item identification number (NIIN) sequence. The NIIN consists of the last nine digits of the

NSN
 NSN, i.e. (5305-01-574-1467).
 NIIN

When using this column to locate an item, ignore the first 4 digits of the NSN. However, the complete NSN should be used when ordering items by stock number.

- (2) **FIG. column.** This column lists the number of the figure where the item is identified/located. The figures are in numerical order in Section II and Section III.

- (3) **ITEM column.** The item number identifies the item associated with the figure listed in the adjacent FIG. column. This item is also identified by the NSN listed on the same line.

b. PART NUMBER INDEX. Part numbers in this index are listed by part number in ascending alphanumeric sequence (i.e., vertical arrangement of letter and number combination which places the first letter or digit of each group in order A through Z, followed by the numbers 0 through 9 and each following letter or digit in like order).

- (1) **FSCM column.** The Federal Supply Code for Manufacturer (FSCM) is a 5-digit numeric code used to identify the manufacturer, distributor, or Government agency, etc., that supplies the item.
- (2) **PART NUMBER column.** Indicates the primary number used by the manufacturer (individual, firm, corporation, or Government activity), which controls the design and characteristics of the item by means of its engineering drawings, specifications standards, and inspection requirements to identify an item or range of items.
- (3) **STOCK NUMBER column.** This column lists the NSN for the associated part number and manufacturer identified in the PART NUMBER and FSCM columns to the left.
- (4) **FIG. column.** This column lists the number of the figure where the item is identified/located in Sections II and III.
- (5) **ITEM column.** The item number is that number assigned to the item as it appears in the figure referenced in adjacent figure number column.

c. FIGURE AND ITEM NUMBER INDEX.

- (1) **FIG. column.** This column lists the number of the figure where the item is identified/located in Section II and III.
- (2) **ITEM column.** The item number is that number assigned to the item as it appears in the figure referenced in the adjacent figure number column.
- (3) **STOCK NUMBER column.** This column lists the NSN for the item.
- (4) **FSCM column.** The Federal Supply Code for Manufacturer (FSCM) is a 5-digit numeric code used to identify the manufacturer, distributor, or Government agency, etc., that supplies the item.
- (5) **PART NUMBER column.** Indicates the primary number used by the manufacturer (individual, firm, corporation, or Government activity), which controls the design and characteristics of the item by means of its engineering drawings, specifications standards, and inspection requirements to identify an item or range of items.

5. SPECIAL INFORMATION.

a. USABLE ON CODE. The usable on code appears in the lower left corner of the Description column heading. Usable on codes are shown as "UOC:" in the Description Column (justified left) on the last line applicable item description/nomenclature. Uncoded items are applicable to all models.

b. ASSOCIATED PUBLICATIONS. The publications listed below pertains to the Compressor Unit, Reciprocating Section and its components.

Publication	Short Title
TM 5-4310-370-14	Compressor Unit, Reciprocating, Electric Motor Driven

HOW TO LOCATE REPAIR PARTS.

a. When National Stock Number or Part Number is NOT Known.

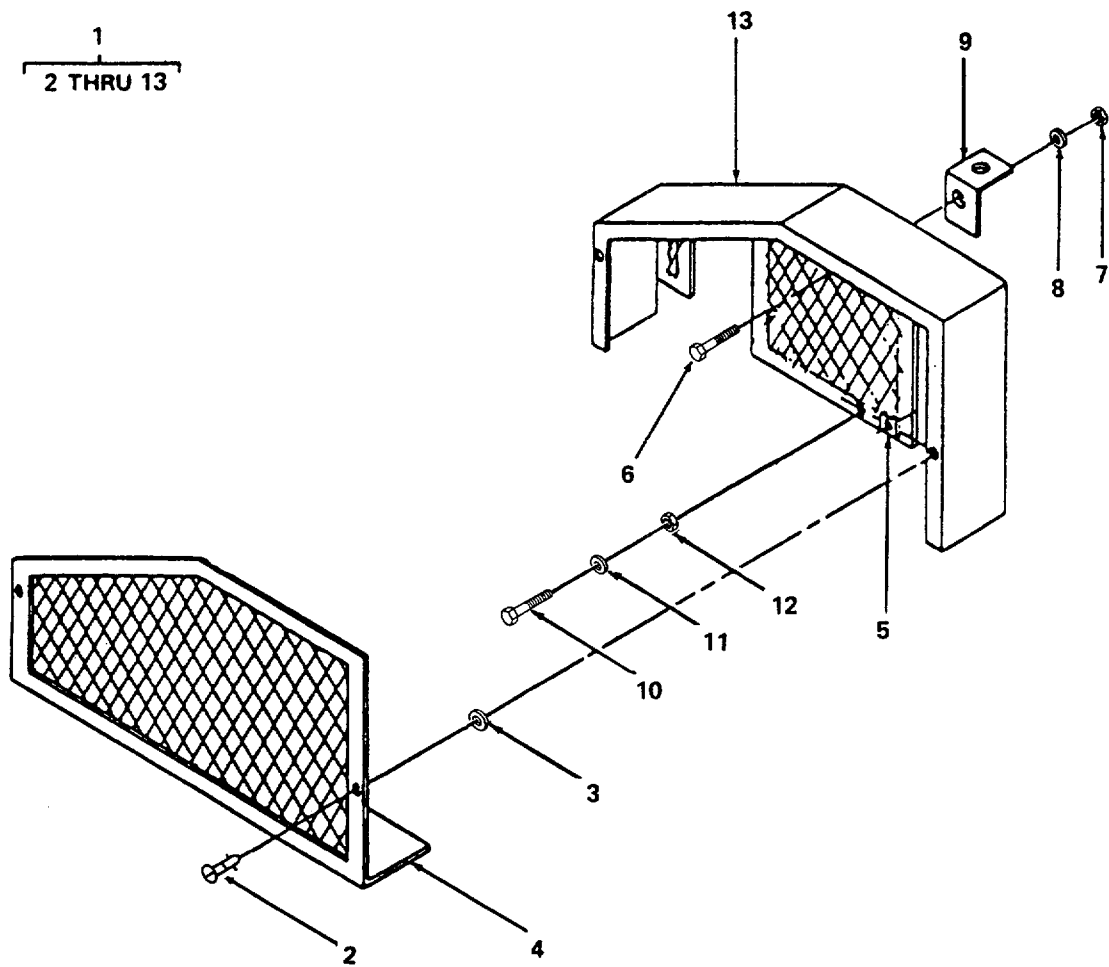
- (1) **First.** Using the table of contents, determine the assembly group for subassembly group to which the item belongs. This is necessary since figures are prepared for assembly groups and subassembly groups, and listings are divided into the same groups.
- (2) **Second.** Find the figure covering the assembly group or subassembly group to which the item belongs.
- (3) **Third.** Identify the item on the figure and note the item number.
- (4) **Fourth.** Refer to the Repair Parts List for the figure to find the part number for the item number noted on the figure.
- (5) **Fifth.** Refer to the Part Number Index to find the NSN, if assigned.

b. When National Stock Number or Part Number is Known:

- (1) **First.** Using the Index of National Stock Numbers and Part Numbers, find the pertinent National Stock Number or Part Number. The NSN index is in National Item Identification Number (NIIN) sequence (see 4a(1)). The part numbers in the Part Number index are listed in ascending alphanumeric sequence (see paragraph 4b). Both indexes cross-reference you to the illustration figure and item number of the item you are looking for.
- (2) **Second.** After finding the figure and item number, verify that the item is the one you are looking for, then locate the item number in the repair parts list for the figure.

7. ABBREVIATIONS. Abbreviations used in this manual are listed in MIL-STD-12.

SECTION II



4766-001

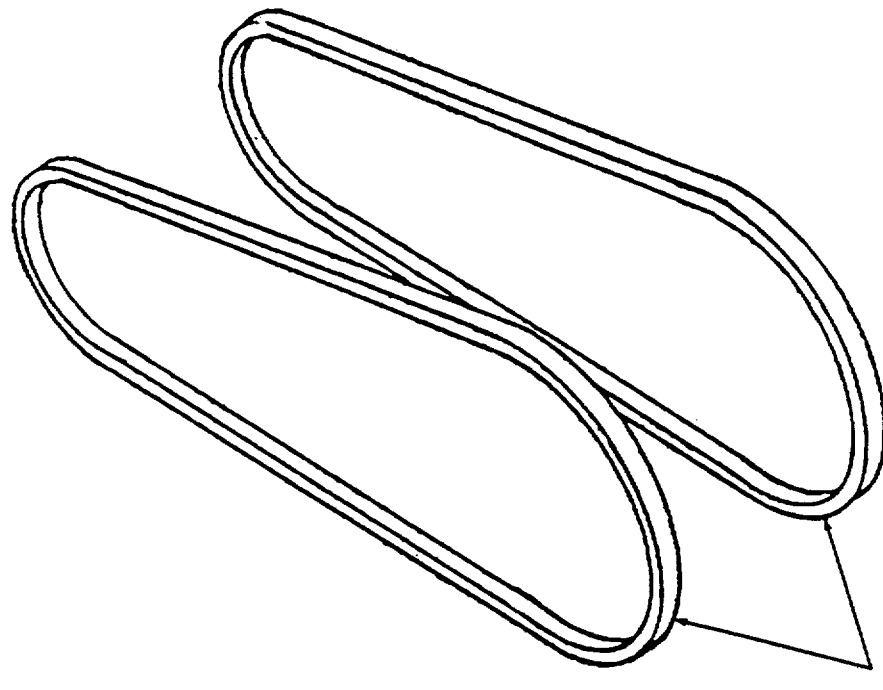
Figure 1. Belt Guard Assembly.

SECTION II

TM 5-4310-370-24P

(1) ITEM NO	(2) SMR CODE	(3) FSCM	(4) PART NUMBER	(5) DESCRIPTION AND USABLE ON CODES (UOC)	(6) QTY
				GROUP 01 BELT GUARD	
				FIG. 1 BELT GUARD ASSEMBLY	
1	XBOFF	19272	50-6753	BELT GUARD ASSY.....	1
2	PAOZZ	94222	82-11-420-16	.FASTENER, BELT GUARD.....	2
3	PAOZZ	94222	82-32-101-20	.WASHER, SPLIT.....	2
4	XBOFF	19272	20-6171	.GUARD, BELT, FRONT.....	1
5	PAOZZ	94222	82-47-108-15	.RECEPTACLE, CLIP ON.....	2
6	PAOZZ	96906	MS90726-32	.BOLT, MACHINE.....	1
7	PAOZZ	96906	MS35649-2312	.NUT, 5/16-18.....	1
8	XDOZZ	96906	MS35338-45	.WASHER, LOCK.....	1
9	XBOZZ	19272	20-6149	.ANGLE, SUPPORT.....	1
10	PAOZZ	96906	MS35292-32	.BOLT, MACHINE.....	4
11	XDOZZ	96906	MS35338-45	.WASHER, LOCK.....	4
12	PAOZZ	96906	MS35649-2312	.NUT, 5/16-8.....	4
13	XBOFF	19272	20-6172	.GUARD, BELT, REAR.....	1

END OF FIGURE



4766-002

Figure 2. V-Belts.

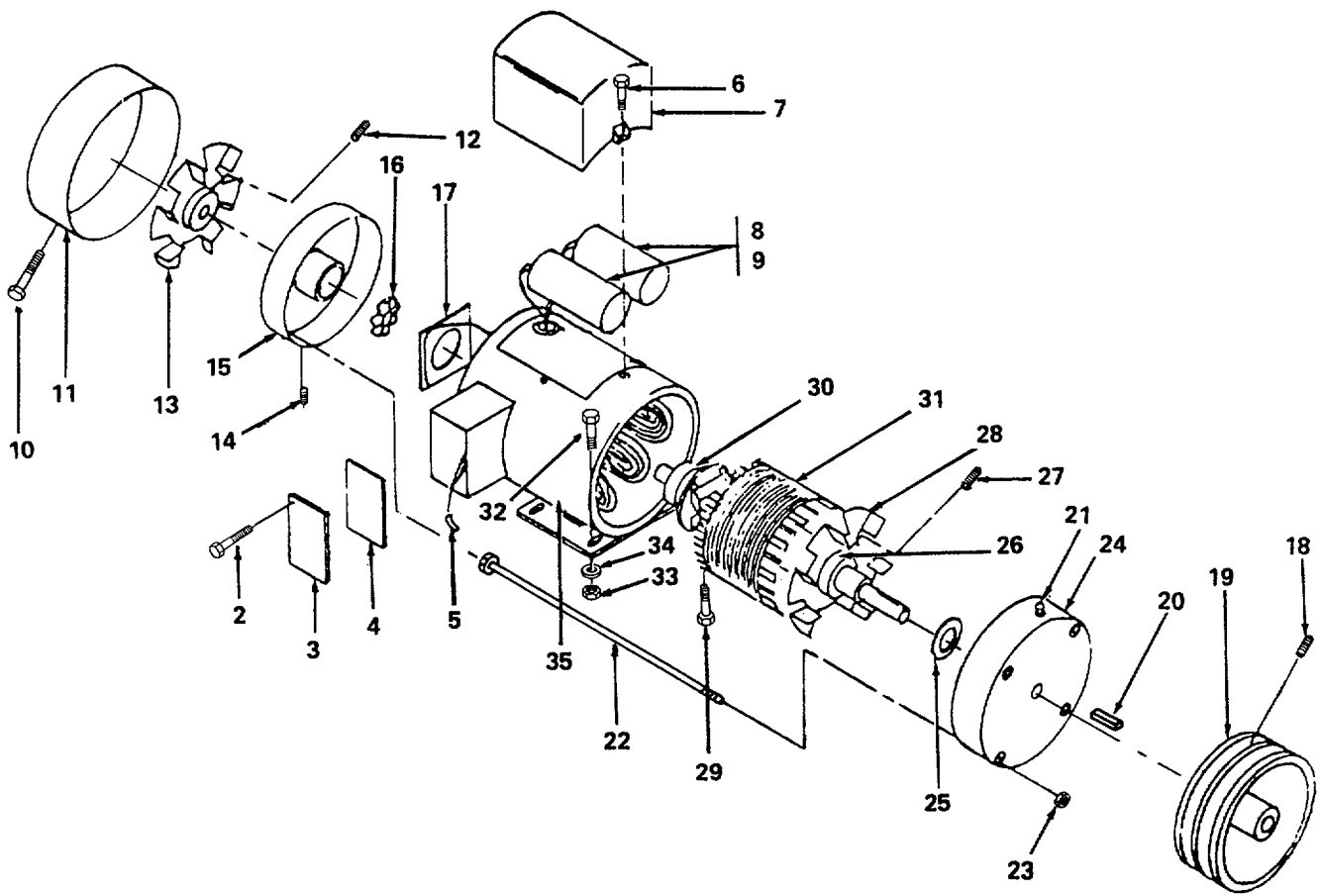
SECTION II

TM 5-4310-370-24P

(1) ITEM NO	(2) SMR CODE	(3) FSCM	(4) PART NUMBER	(5) DESCRIPTION AND USABLE ON CODES (UOC)	(6) QTY
				GROUP 01 BELT GUARD	
				FIG. 2 V-BELTS	
1	PAOZZ	96906	MS39242-37	.BELT, V	2

END OF FIGURE

1
2 THRU 35



4766-003

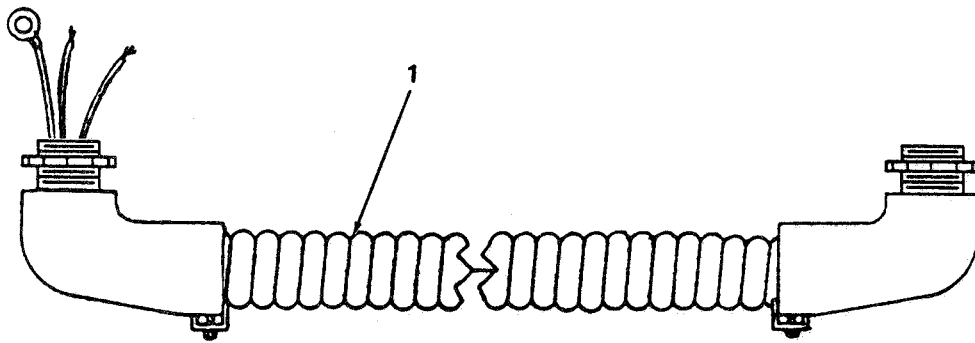
Figure 3. Motor.

SECTION II

TM 5-4310-370-24P

(1) ITEM NO	(2) SMR CODE	(3) FSCM	(4) PART NUMBER	(5) DESCRIPTION AND USABLE ON CODES (UOC)	(6) QTY
				GROUP 02 ELECTRIC MOTORS & RELATED PARTS	
				FIG. 3 MOTOR	
1	PBOFF	05472	35F927-2208	MOTOR	1
2	PAOZZ	96906	MS24627-32	.SCREW, TAPPING , THREA	4
3	PAOZZ	05472	36-49	.COVER	1
4	PAFZZ	05472	36-48	.GASKET	1
5	XBFZZ	30119	13-0241	.NUT, WIRE.....	4
6	PAOZZ	96906	MS51031-49	.SETSCREW.....	2
7	XBFZZ	05472	35-1231	.BOX, CAPACITOR.....	1
8	PAFZZ	05472	03712	.CAPACITOR 12.5MFD, 370VAC	1
9	PAFZZ	05472	01300	.CAPACITOR, FICED, ELE 860-950MFD,	1
				110VAC.....	
10	PAOZZ	05472	10X318 TYPE B	.SCREW, TAPPING, THREA.....	3
11	XBFZZ	05472	35-7697	.HOUSING, REAR	1
12	XDOZZ	05472	1/4-20-3/16	.SCREW, FAN.....	1
13	XBFZZ	05472	35-63B	.FAN, REAR.....	1
14	PAOZZ	05472	1/4-28X1/4 SLOT	.PLUG, GREASE, REAR.....	1
15	XBFZZ	05472	35-8503	.END PLATE, FR	1
16	XBFZZ	05472	W1543-017(W-B)	.WASHER, WAVY	1
17	XDFZZ	05472	SP5005	.SWITCH, ROTARY	2
18	PAOZZ	96906	MS16998-40	.SCREW, SET, PULLEY MOTOR.....	1
19	XBFZZ	71176	2AK49	.PULLEY, MOTOR.....	1
20	XBFZZ	05472	6-30	.KEY, MOTOR, PULLEY	1
21	PAOZZ	05472	400V	.FITTING, LUBRICATION	1
22	PAOZZ	05472	35-32G	.BOLT, THRU.....	4
23	PAOZZ	05472	10-32UNC	.NUT, THRU BOLT	4
24	XBFZZ	05472	35-8503	.END PLATEPU.....	1
25	XBFZZ	05472	1/2X13/64X18GAST	.WASHER, BALANCE	1
26	PAFZZ	05472	205	.BEARING PART MUST BE RE QN WITH	1
				PART 35-5618	
27	PAOZZ	96906	MS51965-51	.SETSCREW	1
28	XBFZZ	05472	35-63B	.FAN, FRONT.....	1
29	PAOZZ	96906	MS24629-35	.SCREW, TAPPING, THREA	4
30	PAFZZ	05472	203	.BEARING, BALL, ANNULA PART MUST BE	1
				REQN WITH PART 35-5618.....	
31	XBFZZ	05472	35-5618	.ROTOR-SHAFT ASS'Y	1
32	PAOZZ	96906	MS35292-32	.BOLT, MACHINE	4
33	PAOZZ	96906	MS35649-2312	.NUT, 5/16-18.....	4
34	XDOZZ	96906	MS35338-45	.WASHER, LOCK	4
35	XBFZZ	05472	35-7755	.STATOR	1

END OF FIGURE



4766-004

Figure 4. Motor Cable

SECTION II

TM 5-4310-370-24P

(1) ITEM NO	(2) SMR CODE	(3) FSCM	(4) PART NUMBER	(5) DESCRIPTION AND USABLE ON CODES (UOC)	(6) QTY
				GROUP 02 ELECTRIC MOTOR & RELATED PARTS	
				FIG. 4 MOTOR CABLE	
1	PAFZZ	19272	50-6759	.CABLE, MOTOR.....	1

END OF FIGURE

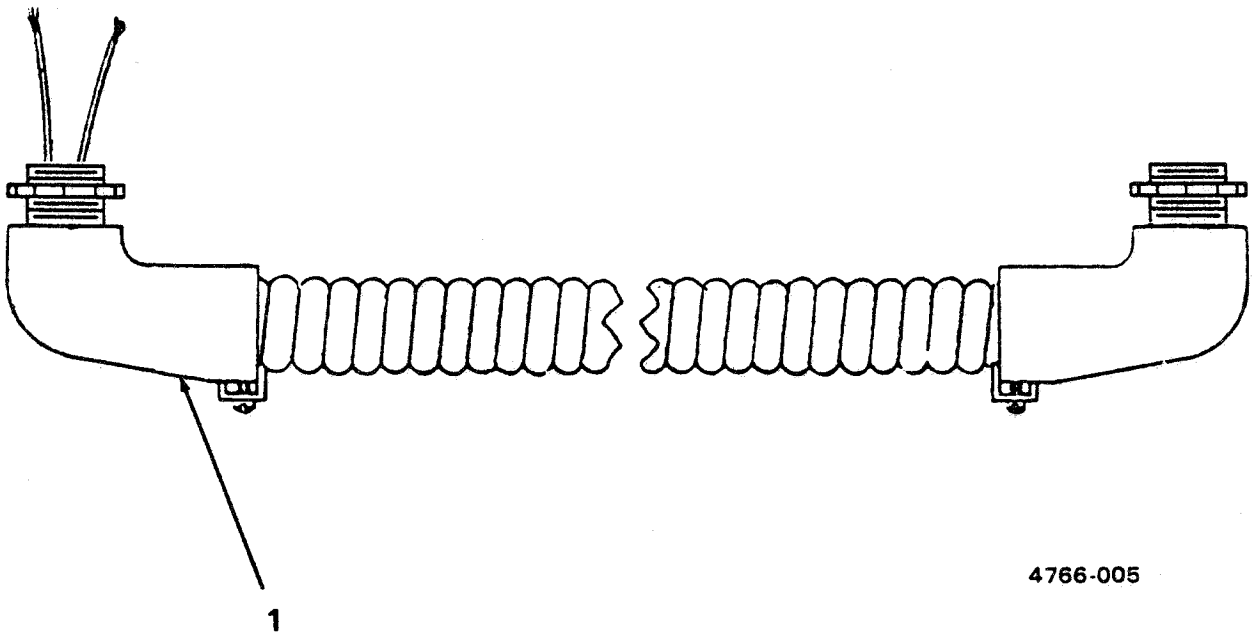


Figure 5. Pressure Switch Cable.

SECTION II

TM 5-4310-370-24P

(1) ITEM NO	(2) SMR CODE	(3) FSCM	(4) PART NUMBER	(5) DESCRIPTION AND USABLE ON CODES (UOC)	(6) QTY
				GROUP 02 ELECTRIC MOTOR & RELATED PARTS	
				FIG. 5 PRESSURE SWITCH CABLE	
1	PAFZZ	19272	50-6760	.CABLE, PRESSURE SWITCH.....	1

END OF FIGURE

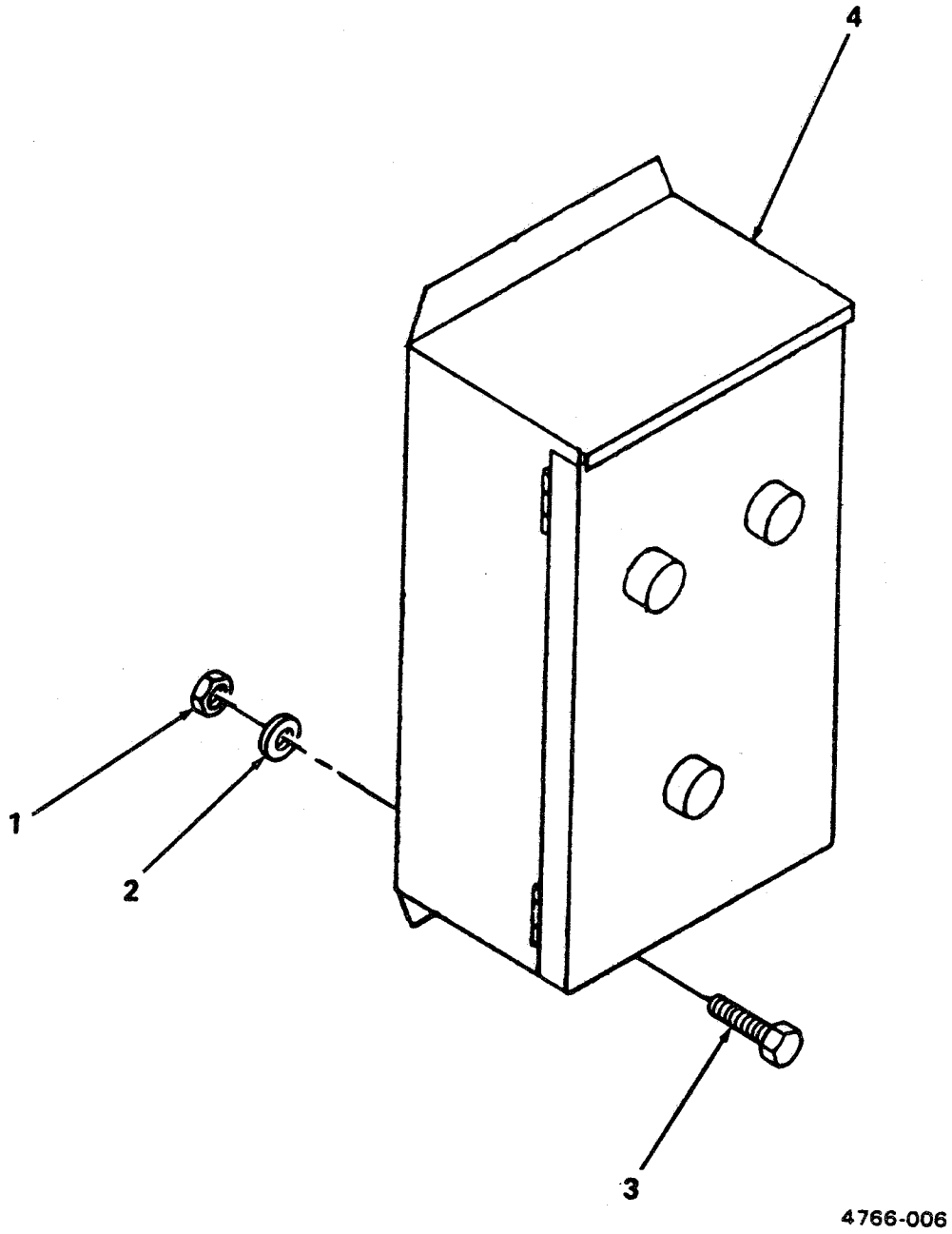


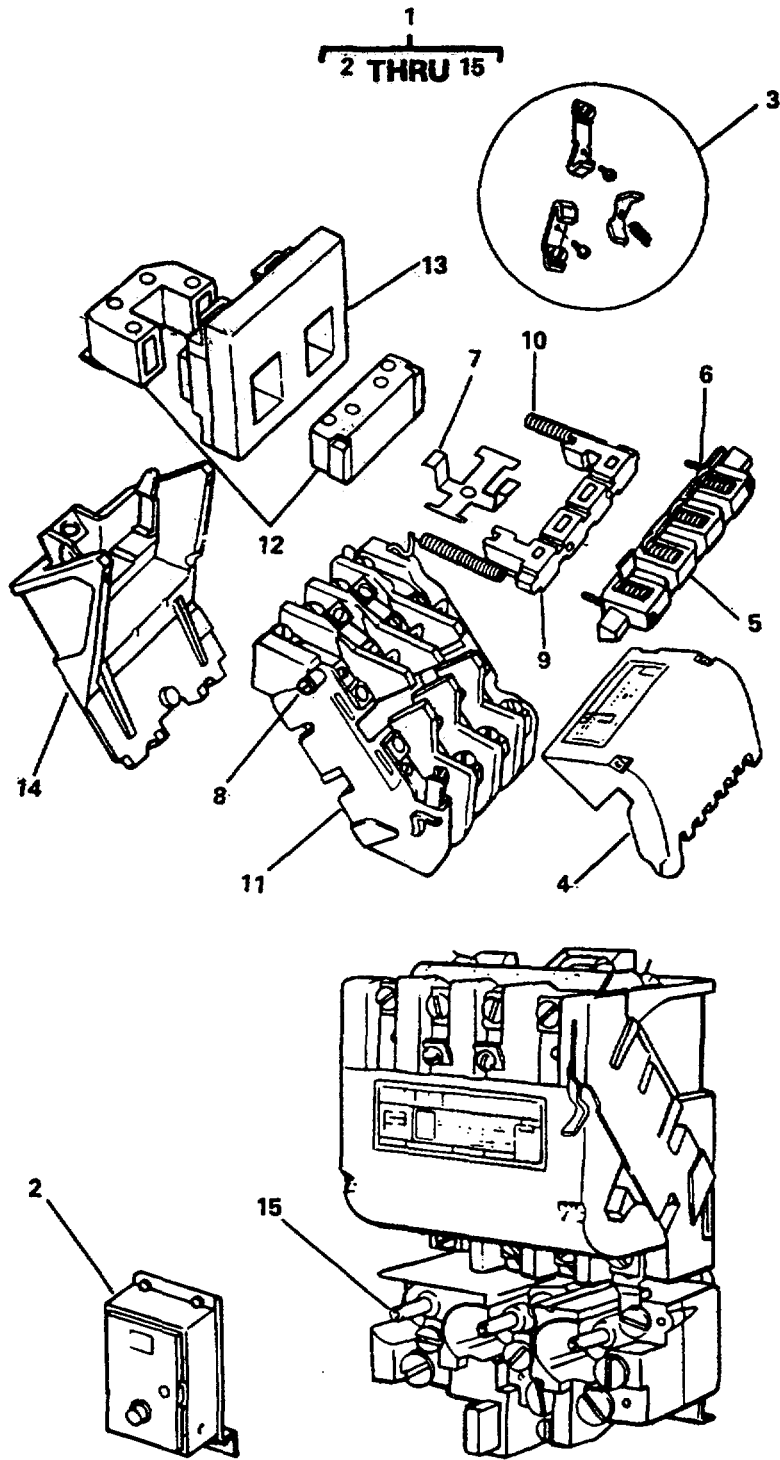
Figure 6. Starter Switch.

SECTION II

TM 5-4310-370-24P

(1) ITEM NO	(2) SMR CODE	(3) FSCM	(4) PART NUMBER	(5) DESCRIPTION AND USABLE ON CODES (UOC)	(6) QTY
				GROUP 02 ELECTRIC MOTOR & RELATED PARTS	
				FIG. 6 STARTER SWITCH	
1	PAOZZ	96906	MS35649-2312	.NUT, 5/16-18.....	2
2	XDOZZ	96906	MS35338-45	.WASHER, LOCK	2
3	PAOZZ	96906	MS35292-32	.BOLT, MACHINE	2
4	PBFZZ	19272	13-0246	.SWITCH, STARTER.....	1

END OF FIGURE



4760-002

Figure 6A. Motor Starter.

Change 1

SECTION II

TM 5-4310-370-24P

(1) ITEM NO	(2) SMR CODE	(3) FSCM	(4) PART NUMBER	(5) DESCRIPTION AND USABLE ON CODES (UOC)	(6) QTY
GROUP 02 ELECTRIC MOTOR AND RELATED PARTS					
FIG. 6A MOTOR STARTER.					
1	XBFFF	23826	14CF120A	STARTER, MAGNETIC	1
2	XBFZZ	04718	1047-08	.ENCLOSURE, STARTER NEMA 12	1
3	XBFZZ	23826	75CF14	CONTACT, POWER POLE	1
4	XBFZZ	23826	73062-001	.COVER, CONTACT BOARD	1
5	XBFZZ	23826	D54670-001	.CROSS ARM	1
6	XBFZZ	23826	D25013-001	.SCREW	1
7	XBFZZ	23826	24817-001	.CLIP, SPRING	1
8	XBFZZ	23826	D24827-001	.SCREW, TAPPING, THREA	2
9	XBFZZ	23826	D54873-001	.BASE, CROSS ARM	1
10	XBFZZ	23826	D24826-001	.SPRING, CROSS ARM	1
11	XBFZZ	23826	D73116-021	.BOARD, CONTACT	1
12	XBFZZ	23826	D25551-001	.MAGNET AND ARMATURE	1
13	XBFZZ	23826	75D73070A	.COIL, 60HZ 110-120/208-240 VOLTS	1
				50HZ 110 VOLTS	
14	XBFZZ	23826	D73060-001	.BASE	1
15	XBFZZ	23826	48DC11A2	.RELAY, OVERLOAD	1

END OF FIGURE

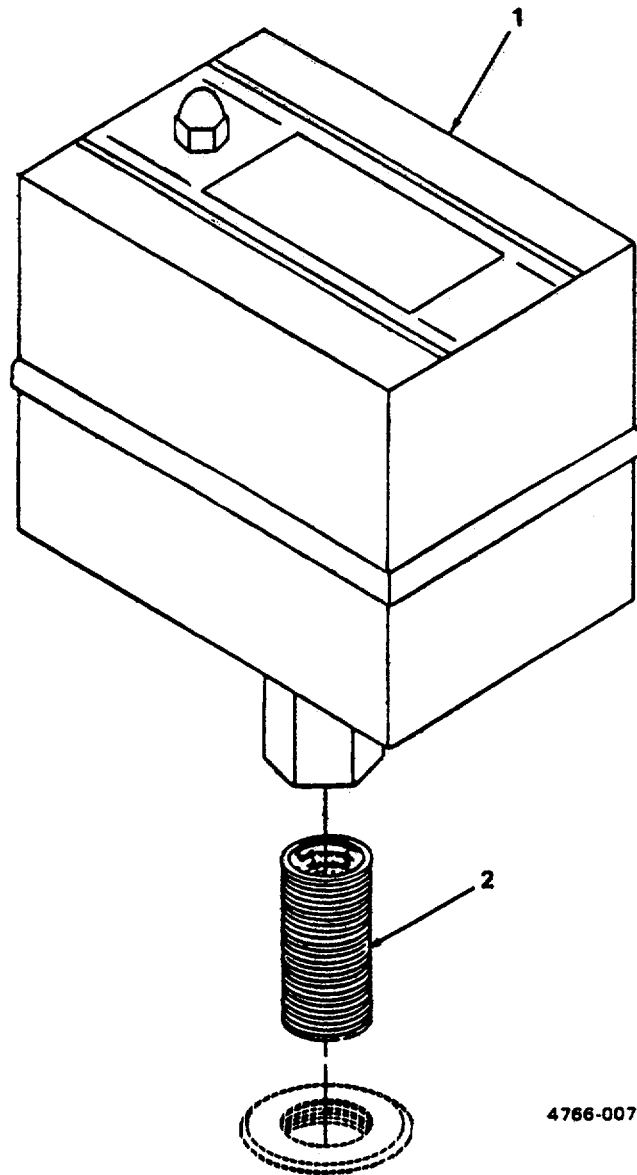


Figure 7. Pressure Switch.

Change 1

SECTION II

TM 5-4310-370-24P

(1) ITEM NO	(2) SMR CODE	(3) FSCM	(4) PART NUMBER	(5) DESCRIPTION AND USABLE ON CODES (UOC)	(6) QTY
GROUP 02 ELECTRIC MOTOR & RELATED PARTS					
FIG. 7 PRESSURE SWITCH					
1	PBFZZ	51917	9013-GHG-2	.SWITCH, PRESSURE	1
2	PAOZZ	96906	MS51953-25	.NIPPLE, PIPE	1

END OF FIGURE

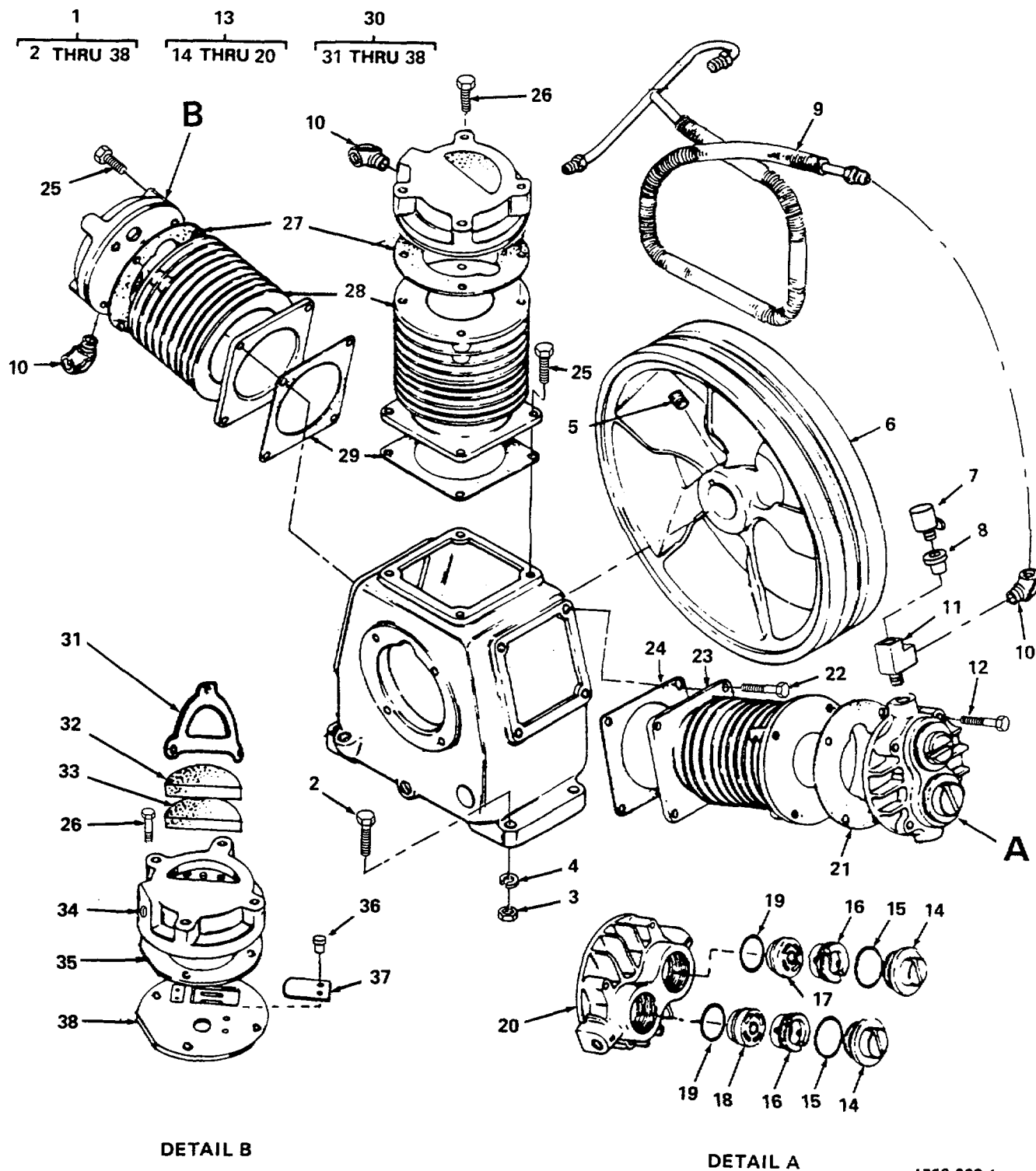
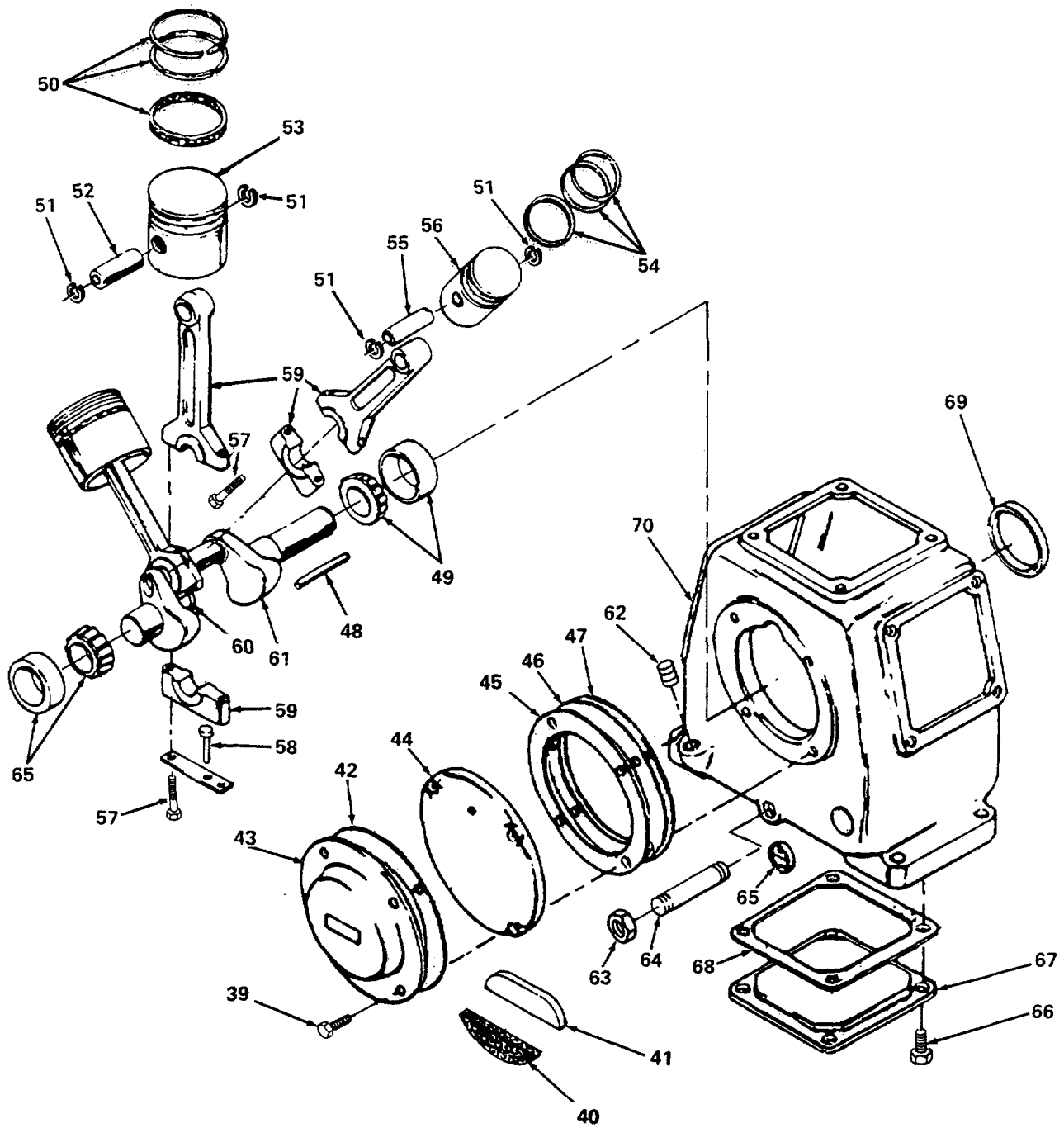


Figure 8. Compressor Pump (Sheet 1 of 2).



4766-008-2

Figure 8. Compressor Pump (Sheet 2 of 2).

SECTION II

TM 5-4310-370-24P

(1) ITEM NO	(2) SMR CODE	(3) FSCM	(4) PART NUMBER	(5) DESCRIPTION AND USABLE ON CODES (UOC)	(6) C2 QTY
GROUP 03 AIR COMPRESSOR ASSEMBLY					
FIG. 8 COMPRESSOR PUMP					
1	PBOFH	11568	CAW1	COMPRESSOR, RECIPROC	1
2	PAOZZ	96906	MS35292-32	.BOLT, MACHINE	4
3	PAOZZ	96906	MS35649-2312	.NUT, 5/16-18	4
4	XDOZZ	96906	MS35338-45	.WASHER, LOCK	4
5	PAOZZ	36422	1X485	.SETSCREW.....	1
6	PBOZZ	11568	NR-4-7A	.FLYWHEEL, COMPRESSOR	1
7	PAFZZ	75336	128 1/4 75	.VALVE, SAFETY RELIEF	1
8	XBFZZ	19272	100-64	.BUSHING, 3/8-1/4	1
9	PBFZZ	11568	A-12A	.MANIFOLD, FLUID COOL	1
10	XBFZZ	11568	Z-515	.FITTING, COMPRESSION.....	3
11	XBFZZ	19272	316-6	.TEE, STREET	1
12	PAOZZ	97942	330C889P5018C20	.SCREW, CAP, HEXAGON H.....	4
13	PBFZZ	11568	ZC-1	.CYLINDER HEAD, COMPR	1
14	PAOZZ	11568	B-28B	..PLUG, MACHINE THREAD.....	2
15	PAFZZ	11568	B-75	..GASKET, VALVE CHAMBER CAP	2
16	PAFZZ	11568	B-26A	..RETAINER, EXHAUST VA	1
17	PAOZZ	11568	Z-184	..VALVE ASSEMBLY, INTA	1
18	PAFZZ	11568	Z-122A	..VALVE, EXHAUST	1
19	PAFZZ	11568	U-48	..GASKET, VALVE	2
20	PAOFH	11568	C-1	..CYLINDER HEAD, COMPR	1
21	PAFZZ	11568	C-31	.GASKET	1
22	PAOZZ	70188	2X167	.BOLT, MACHINE	4
23	XBHZZ	11568	C-6B	.BLOCK, CYLINDER, HIGH.....	1
24	PAFZZ	11568	A-29	.GASKET	1
25	PAFZZ	70188	2X167	.BOLT, MACHINE	8
26	PAOZZ	96906	MS51095-337	.SCREW, CAP, HEXAGON H.....	8
27	PAFZZ	11568	B-31	.GASKET	2
28	XBHZZ	11568	A-6A	.CYLINDER, RECIPROCAT	2
29	PAFZZ	11568	A-29	.GASKET	2
30	PBFZZ	11568	Z-676	.HEAD ASSEMBLY, REED.....	2
31	PBOZZ	11568	P-3703A	..RETAINER FILTER	1
32	PAOZZ	11568	M-1586	..FILTER ELEMENT, INTA	1
33	PAOZZ	11568	M-1587	..PAD, INTAKE, COMPRESS	1
34	PBFZZ	11568	M-1561	..CYLINDER HEAD, COMPR	1
35	PAFZZ	11568	M-1564	..GASKET	1
36	PAFZZ	11568	M-1565	..SCREW	4
37	PAFZZ	11568	M-1563	..FLAPPER, MAGNETIC, VA.....	2
38	PAFZZ	11568	M-1562	..PLATE, REED VALVE	1
39	PAOZZ	00365	F98	.SCREW, CAP, HEXAGON	4
40	XBFZZ	11568	P4582A	.SEPARATOR, OIL	1
41	PAOZZ	11568	P4581A	.FILTER ELEMENT, INTA	1
42	PAFZZ	11568	C-30	.GASKET	1
43	XBOZZ	11568	A-100	.BREATHER	1
44	XBFZZ	11568	C-14C	.COVER, CRANKCASE	1
45	PAFZZ	11568	C-30	.GASKET	1
46	PAFZZ	11568	C-30B	.GASKET R, .005 INCH.....	1
47	PAFZZ	11568	C-30B	.GASKET R, .010 INCH.....	1
48	PAOZZ	96906	MS20066-256	.KEY, MACHINE	1

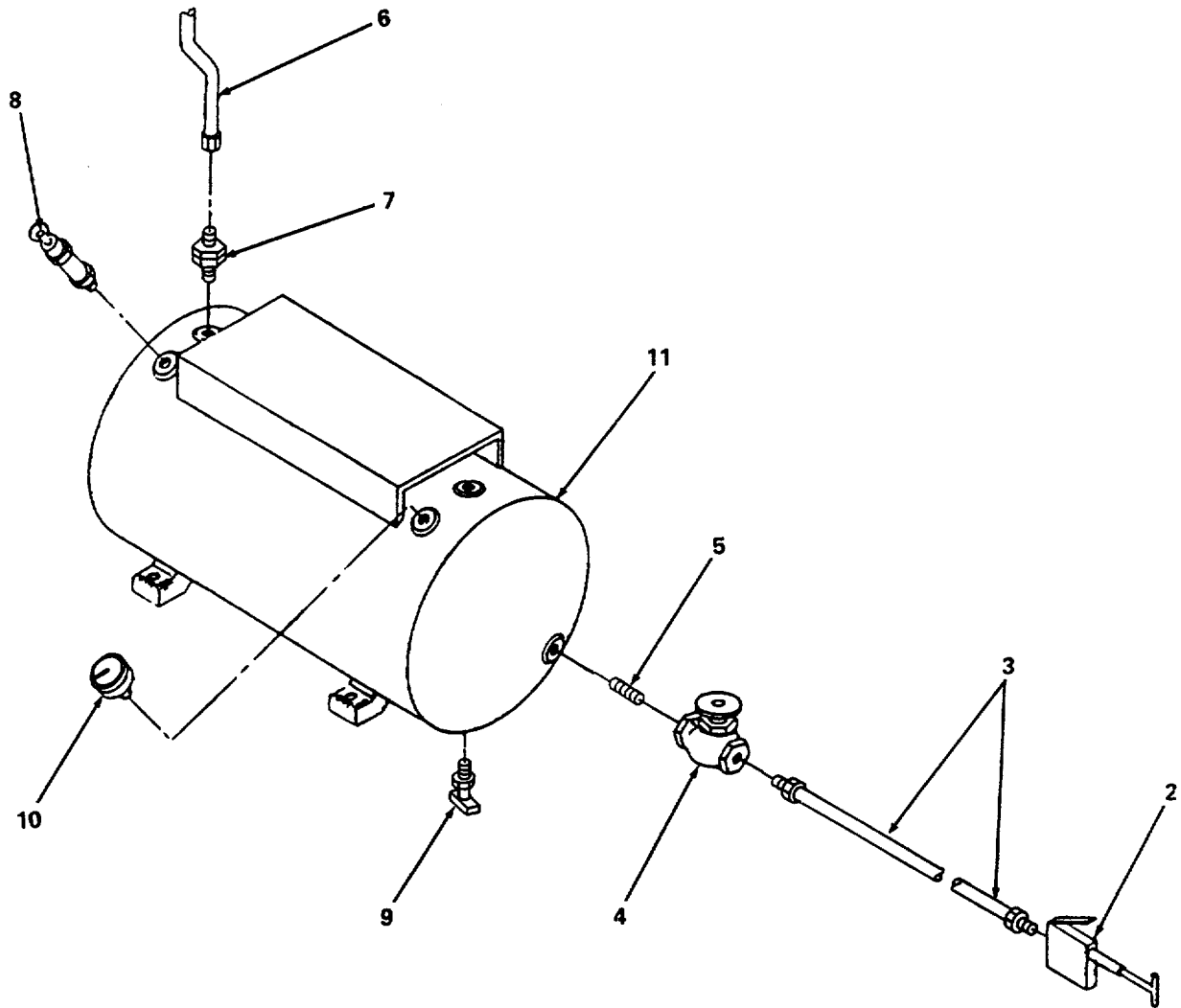
SECTION II

TM 5-4310-370-24P

(1) ITEM NO	(2) SMR CODE	(3) FSCM	(4) PART NUMBER	(5) DESCRIPTION AND USABLE ON CODES (UOC)	(6) QTY
49	PAFZZ	11568	ZC-16	..BEARING ASSEMBLY NG	1
50	PAFZZ	11568	ZA-10	..RING SET, LOW PR RING	2
51	XBFZZ	11568	A-102	.RING, RETAINING	6
52	PBFZZ	11568	A-21	.PIN, PISTON	2
53	XDFZZ	11568	A-4A	.PISTON, COMPRESSOR	2
54	PAFZZ	11568	ZC-10	.RING SET, HIGH PR RING	1
55	PAFZZ	11568	C-21A	.PIN, PISTON	1
56	PAFZZ	11568	C-4A	.PISTON, COMPRESSOR.	1
57	PAOZZ	11568	M-780	.SCREW, CAP, HEXAGON	6
58	XBFZZ	11568	P-5086A	.PIN, DIPPER, CENTER.	1
59	PBFZZ	11568	P-5031B	.ROD , CONNECTING, ASSY	3
60	XBFZZ	11568	P-5087A	.SCOOP, OIL, LEFT.	1
61	PAHZZ	11568	C-5	.CRANKSHAFT, COMPRESS.	1
62	XBCZZ	11568	M-1796	.PLUG, PIPE	1
63	PBCZZ	11568	M-461	.CAP, PIPE	1
64	PAOZZ	96906	MS51953-59B	.NIPPLE, PIPE	1
65	PAFZZ	11568	B-14	.INDICATOR, SIGHT, LIQ OIL LEVEL.....	1
66	PAOZZ	11568	M-565	.SCREW, CAP, HEXAGON.	4
67	PBFZZ	11568	A-15	.COVER, ACCESS.	1
68	PAFZZ	11568	A-33	.GASKET	1
69	PAFZZ	80201	10515	.SEAL, PLAIN ENCASED.....	1
70	XDHZZ	11568	B-9	.CRANKCASE.	1

END OF FIGURE

1
2 THRU 11



4766-009

Figure 9. Air Receiver Assembly.

SECTION II

TM 5-4310-370-24P

(1) ITEM NO	(2) SMR CODE	(3) FSCM	(4) PART NUMBER	(5) DESCRIPTION AND USABLE ON CODES (UOC)	(6) QTY
GROUP 04 AIR RECEIVER					
FIG. 9 AIR RECEIVER ASSEMBLY					
1	XBOFH	19272	50-6754	RECEIVER AIR ASSY	1
2	PAOZZ	94894	61-J2-1506	.INFLATOR-GAGE, PNEUM	1
3	PAOZZ	19272	50-6741	.HOSE ASSEMBLY, NONME	1
4	PAOZZ	75336	501 1/4	.VALVE, GLOBE.....	1
5	PAOZZ	96906	MS51953-25	.NIPPLE, PIPE.....	1
6	XBOZZ	19272	50-6757	.TUBE, AFTERCOOL, ASSY	1
7	PAFZZ	58818	A-12	.VALVE CHECK.....	1
8	PAFZZ	75336	112C1/4 200	.VALVE, SAFETY RELIEF	1
9	PAOZZ	96906	MS35782-5	.COCK, DRAIN	1
10	PAOZZ	61349	050755	.GAGE, PRESSURE , DIAL.....	1
11	XBOZZ	19272	50-6716	.RECEIVER, AIR	1

END OF FIGURE

Section III. SPECIAL TOOLS LIST

(Not Applicable)

CROSS-REFERENCE INDEXES

NATIONAL STOCK NUMBER INDEX					
STOCK NUMBER	FIG.	ITEM	STOCK NUMBER	FIG.	ITEM
4310-00-033-1415	8	20	4310-01-040-7863	8	55
4310-00-035-6246	8	16	4820-01-041-8006	8	37
5306-00-050-1238	1	6	5910-01-043-4846	3	9
2930-00-105-2373	8	9	5325-01-051-0869	1	5
5306-00-149-7111	8	22	4310-01-052-2462	8	41
	8	25	5330-01-065-5889	8	68
6680-00-150-6875	8	65	5330-01-065-8851	3	4
4730-00-188-1870	8	64	5305-01-065-9046	8	36
4730-00-196-1465	7	2	5330-01-067-9696	3	3
	9	5	5330-01-073-6966	8	27
4910-00-204-2644	9	2	5330-01-073-6967	8	24
5315-00-256-4794	8	48		8	29
5330-00-295-8839	8	21	3120-01-079-6373	3	26
6685-00-425-2373	9	10	4310-01-095-2077	8	30
4820-00-477-7958	9	8	4310-01-095-2088	8	13
3110-00-516-5289	3	30	4310-01-095-3581	8	61
5306-00-559-0474	1	10	5305-01-096-1246	8	57
	3	32	4935-01-100-6567	8	49
	6	3	4935-01-100-6569	8	31
	8	2	5330-01-106-9382	8	15
5305-00-724-6789	3	27	5330-01-106-9383	8	19
5305-00-727-1282	3	6	6150-01-108-5793	4	1
5306-00-781-5649	8	26	6150-01-108-5794	5	1
5310-00-829-9981	1	7	6105-01-108-7073	3	1
	1	12	4310-01-108-7901	8	59
	3	33	4820-01-109-1399	9	4
	6	1	4720-01-109-1426	9	3
	8	3	4820-01-109-4670	9	7
4820-00-849-1220	9	9	5910-01-110-3557	3	8
5305-00-855-0961	3	29	5305-01-111-7273	3	22
5305-00-884-0156	3	2	5310-01-111-9441	3	23
5330-00-900-2337	8	42	5325-01-112-6166	1	2
	8	45	5930-01-186-8495	6	4
5330-00-900-2340	8	46			
	8	47			
4310-00-911-6607	8	17			
4310-00-911-6608	8	18			
4310-00-911-9571	8	54			
5310-00-949-6139	1	3			
5305-00-965-7306	3	10			
5305-00-983-6657	3	18			
5305-01-015-3345	8	5			
4310-01-021-1589	8	52			
5330-01-022-1857	8	35			
4310-01-039-3732	8	34			
5340-01-039-5950	8	67			
4310-01-039-5955	8	56			
4310-01-039-6115	8	38			
4310-01-039-6504	8	33			
4310-01-040-3470	8	32			

FSCM	PART NUMBER	PART NUMBER INDEX		FIG.	ITEM
			STOCK NUMBER		
11568	A-100			8	43
11568	A-102			8	51
58818	A-12		4820-01-109-4670	9	7
11568	A-12A		2930-00-105-2373	8	9
11568	A-15		5340-01-039-5950	8	67
11568	A-21		4310-01-021-1589	8	52
11568	A-29		5330-01-073-6967	8	24
				8	29
11568	A-33		5330-01-065-5889	8	68
11658	A-4A			8	53
11568	A-6A			8	28
11568	B-14		6680-00-150-6875	8	65
11568	B-26A		4310-00-035-6246	8	16
11568	B-28B			8	14
11568	B-31		5330-01-073-6966	8	27
11568	B-75		5330-01-106-9382	8	15
11568	B-9			8	70
11568	C-1		4310-00-033-1415	8	20
11658	C-14C			8	44
11568	C-21A		4310-01-040-7863	8	55
11568	C-30		5330-00-900-2337	8	42
				8	45
11568	C-30B		5330-00-900-2340	8	46
				8	47
11568	C-31		5330-00-295-8839	8	21
11568	C-4A		4310-01-039-5955	8	56
11568	C-5		4310-01-095-3581	8	61
11568	C-6B			8	23
11568	CAW1			8	1
23826	D24826-001			6A	10
23826	D24827-001			6A	8
23826	D25013-001			6A	6
23826	D25551-001			6A	12
23826	D54670-001			6A	5
23826	D54873-001			6A	9
23826	D73060-001			6A	14
23826	D73116-021			6A	11
11568	M-1561		4310-01-039-3732	8	34
11568	M-1562		4310-01-039-6115	8	38
11568	M-1563		4820-01-041-8006	8	37
11568	M-1564		5330-01-022-1857	8	35
11568	M-1565		5305-01-065-9046	8	36
11568	M-1586		4310-01-040-3470	8	32
11568	M-1587		4310-01-039-6504	8	33
11568	M-1796			8	62
11568	M-457			8	12
11568	M-461			8	63
11568	M-565			8	66
11568	M-696			8	39
11568	M-780		5305-01-096-1246	8	57
96906	MS16998-40		5305-00-983-6657	3	18
96906	MS20066-256		5315-00-256-4794	8	48
96906	MS24627-32		5305-00-884-0156	3	2
96906	MS24629-35		5305-00-855-0961	3	29
96906	MS35292-32		5306-00-559-0474	1	10
				3	32
				6	3
				8	2
96906	MS35338-45			1	8

FSCM	PART NUMBER	PART NUMBER INDEX		FIG.	ITEM
		PART NUMBER	STOCK NUMBER		
96906	MS35338-45			1	11
				3	34
				6	2
				8	4
96906	MS35649-2312		5310-00-829-9981	1	7
				1	12
				3	33
				6	1
				8	3
96906	MS35782-5		4820-00-849-1220	9	9
96906	MS39242-37			2	1
96906	MS51031-49		5305-00-727-1282	3	6
96906	MS51095-337		5306-00-781-5649	8	26
96906	MS51953-25		4730-00-196-1465	7	2
				9	5
96906	MS51953-59B		4730-06-188-1870	8	64
96906	MS51965-51		5305-00-724-6789	3	27
96906	MS90726-32		5306-00-050-1238	1	6
11568	NR-4-7A			8	6
11568	P-3703A		4935-01-100-6569	8	31
11568	P-5031B		4310-01-108-7901	8	59
11568	P-5086A			8	58
11568	P-5087A			8	60
11568	P4581A		4310-01-052-2462	8	41
11568	P4582A			8	40
05472	SP5005			3	17
11568	U-48		5330-01-106-9383	8	19
05472	W1543-017(W-B)			3	16
11568	Z-122A		4310-00-911-6608	8	18
11568	Z-184		4310-00-911-6607	8	17
11568	Z-515			8	10
11568	Z-676		4310-01-095-2077	8	30
11568	ZA-10			8	50
11568	ZC-1		4310-01-095-2088	8	13
11568	ZC-10		4310-00-911-9571	8	54
11568	ZC-16		4935-01-100-6567	8	49
05472	01300		5910-01-043-4846	3	9
05472	03712		5910-01-110-3557	3	8
61349	050755		6685-00-425-2373	9	10
05472	1/2X13/64X18GAST			3	25
05472	1/4-20-3/16			3	12
05472	1/4-28X1/4 SLOT			3	14
36422	1X485		5305-01-015-3345	8	5
05472	10-32UNC		5310-01-111-9441	3	23
05472	10X318 TYPE B		5305-00-965-7306	3	10
19272	100-64			8	8
04718	1047-08			6A	2
80201	10515			8	69
75336	112C1/4 200		4820-00-477-7958	9	8
75336	128 1/4 75			8	7
30119	13-0241			3	5
19272	13-0246		5930-01-186-8495	6	4

PART NUMBER INDEX

FSCM	PART NUMBER	STOCK NUMBER	FIG.	ITEM
23826	14CF120A		6A	1
71176	2AK49		3	19
70188	2X167	5306-00-149-7111	8	22
			8	25
19272	20-6149		1	9
19272	20-6171		1	4
19272	20-6172		1	13
05472	203	3110-00-516-5289	3	30
05472	205	3120-01-079-6373	3	26
23826	24817-001		6A	7
19272	316-6		8	11
05472	35-1231		3	7
05472	35-32G	5305-01-111-7273	3	22
05472	35-5618		3	31
05472	35-63B		3	13
			3	28
05472	35-7697		3	11
05472	35-7755		3	35
05472	35-8503		3	15
			3	24
05472	35F927-2208	6105-01-108-7073	3	1
05472	36-48	5330-01-065-8851	3	4
05472	36-49	5330-01-067-9696	3	3
05472	400V		3	21
23826	48DC11A2		6A	15
19272	50-6716		9	11
19272	50-6741	4720-01-109-1426	9	3
19272	50-6753		1	1
19272	50-6754		9	1
19272	50-6757		9	6
19272	50-6759	6150-01-108-5793	4	1
19272	50-6760	6150-01-108-5794	5	1
75336	501 1/4	4820-01-109-1399	9	4
05472	6-30		3	20
94894	61-J2-1506	4910-00-204-2644	9	2
23826	73062-001		6A	4
23826	75CF14		6A	3
23826	75D73070A		6A	13
94222	82-11-420-16	5325-01-112-6166	1	2
94222	82-32-101-20	5310-00-949-6139	1	3
94222	82-47-108-154	5325-01-051-0869	1	5
51917	9013-GHG-2		7	1

CROSS-REFERENCE INDEXES

FIG.	ITEM	FIGURE AND ITEM NUMBER INDEX		PART NUMBER
		STOCK NUMBER	FSCM	
1	1		19272	50-6753
1	2	5325-01-112-6166	94222	82-11-420-16
1	3	5310-00-949-6139	94222	82-32-101-20
1	4		19272	20-6171
1	5	5325-01-051-0869	94222	82-47-108-15
1	6	5306-00-050-1238	96906	MS90726-32
1	7	5310-00-829-9981	96906	MS35649-2312
1	8		96906	MS35338-45
1	9		19272	20-6149
1	10	5306-00-559-0474	96906	MS35292-32
1	11		96906	MS35338-45
1	12	5310-00-829-9981	96906	MS35649-2312
1	13		19272	20-6172
2	1		96906	MS39242-37
3	1	6105-01-108-7073	05472	35F927-2208
3	2	5305-00-884-0156	96906	MS24627-32
3	3	5330-01-067-9696	05472	36-49
3	4	5330-01-065-8851	05472	36-48
3	5		30119	13-0241
3	6	5305-00-727-1282	96906	MS51031-49
3	7		05472	35-1231
3	8	5910-01-110-3557	05472	03712
3	9	5910-01-043-4846	05472	01300
3	10	5305-00-965-7306	05472	10X318 TYPE B
3	11		05472	35-7697
3	12		05472	1/4-20-3/16
3	13		05472	35-63B
3	14		05472	1/4-28X1/4 SLOT
3	15		05472	35-8503
3	16		05472	W1543-017(W-B)
3	17		05472	SP5005
3	18	5305-00-983-6657	96906	MS16998-40
3	19		71176	2AK49
3	20		05472	6-30
3	21		05472	400V
3	22	5305-01-111-7273	05472	35-32G
3	23	5310-01-111-9441	05472	10-32UNC
3	24		05472	35-8503
3	25		05472	1/2X13/64X18GAST
3	26	3120-01-079-6373	05472	205
3	27	5305-00-724-6789	96906	MS51965-51
3	28		05472	35-63B
3	29	5305-00-855-0961	96906	MS24629-35
3	30	3110-00-516-5289	05472	203
3	31		05472	35-5618
3	32	5306-00-559-0474	96906	MS35292-32
3	33	5310-00-829-9981	96906	M535649-2312
3	34		96906	MS35338-45
3	35		05472	35-7755
4	1	6150-01-108-5793	19272	50-6759
5	1	6150-01-108-5794	19272	50-6760

CROSS-REFERENCE INDEXES

FIG.	ITEM	FIGURE AND ITEM NUMBER INDEX		PART NUMBER
		STOCK NUMBER	FSCM	
6	1	5310-00-829-9981	96906	MS35649-2312
6	2		96906	MS35338-45
6	3	5306-00-559-0474	96906	MS35292-32
6	4	5930-01-186-8495	19272	13-0246
6A	1		23826	14CF120A
6A	2		04718	1047-08
6A	3		23826	75CF14
6A	4		23826	73062-001
6A	5		23826	D54670-001
6A	6		23826	D25013-001
6A	7		23826	24817-001
6A	8		23826	D24827-001
6A	9		23826	D54873-001
6A	10		23826	D24826-001
6A	11		23826	D73116-021
6A	12		23826	D25551-001
6A	13		23826	75D73070A
6A	14		23826	D73060-001
6A	15		23826	48DC11A2
7	1		51917	9013-GHG-2
7	2	4730-00-196-1465	96906	MS51953-25
8	1		11568	CAW1
8	2	5306-00-559-0474	96906	MS35292-32
8	3	5310-00-829-9981	96906	MS35649-2312
8	4		96906	MS35338-45
8	5	5305-01-015-3345	36422	1X485
8	6		11568	NR-4-7A
8	7		75336	128 1/4 75
8	8		19272	100-64
8	9	2930-00-105-2373	11568	A-12A
8	10		11568	Z-515
8	11		19272	316-6
8	12		11568	M-457
8	13	4310-01-095-2088	11568	ZC-1
8	14		11568	B-28B
8	15	5330-01-106-9382	11568	B-75
8	16	4310-00-035-6246	11568	B-26A
8	17	4310-00-911-6607	11568	Z-184
8	18	4310-00-911-6608	11568	Z-122A
8	19	5330-01-106-9383	11568	U-48
8	20	4310-00-033-1415	11568	C-1
8	21	5330-00-295-8839	11568	C-31
8	22	5306-00-149-7111	70188	2X167
8	23		11568	C-6B
8	24	5330-01-073-6967	11568	A-29
8	25	5306-00-149-7111	70188	2X167
8	26	5306-00-781-5649	96906	MS51095-337
8	27	5330-01-073-6966	11568	B-31
8	28		11568	A-6A
8	29	5330-01-073-6967	11568	A-29

CROSS-REFERENCE INDEXES

FIG.	ITEM	FIGURE AND ITEM NUMBER INDEX		PART NUMBER
		STOCK NUMBER	FSCM	
8	30	4310-01-095-2077	11568	Z-676
8	31	4935-01-100-6569	11568	P-3703A
8	32	4310-01-040-3470	11568	M-1586
8	33	4310-01-039-6504	11568	M-1587
8	34	4310-01-039-3732	11568	M-1561
8	35	5330-01-022-1857	11568	M-1564
8	36	5305-01-065-9046	11568	M-1565
8	37	4820-01-041-8006	11568	M-1563
8	38	4310-01-039-6115	11568	M-1562
8	39		11568	M-696
8	40		11568	P4582A
8	41	4310-01-052-2462	11568	P4581A
8	42	5330-00-900-2337	11568	C-30
8	43		11568	A-100
8	44		11568	C-14C
8	45	5330-00-900-2337	11568	C-30

CROSS-REFERENCE INDEXES

FIG.	ITEM	FIGURE AND ITEM NUMBER INDEX		PART NUMBER
		STOCK NUMBER	FSCM	
8	46	5330-00-900-2340	11568	C-30B
8	47	5330-00-900-2340	11568	C-30B
8	48	5315-00-256-4794	96906	M520066-256
8	49	4935-01-100-6567	11568	ZC-16
8	50		11568	ZA-10
8	51		11568	A-102
8	52	4310-01-021-1589	11568	A-21
8	53		11568	A-4A
8	54	4310-00-911-9571	11568	ZC-10
8	55	4310-01-040-7863	11568	C-21A
8	56	4310-01-039-5955	11568	C-4A
8	57	5305-01-096-1246	11568	M-780
8	58		11568	P-5086A
8	59	4310-01-108-7901	11568	P-5031B
8	60		11568	P-5087A
8	61	4310-01-095-3581	11568	C-5
8	62		11568	M-1796
8	63		11568	M-461
8	64	4730-00-188-1870	96906	MS51953-59B
8	65	6680-00-150-6875	11568	B-14
8	66		11568	M-565
8	67	5340-01-039-5950	11568	A-15
8	68	5330-01-065-5889	11568	A-33
8	69		80201	10515
8	70		11568	B-9
9	1		19272	50-6754
9	2	4910-00-204-2644	94894	61-J2-1506
9	3	4720-01-109-1426	19272	50-6741
9	4	4820-01-109-1399	75336	501 1/4
9	5	4730-00-196-1465	96906	M551953-25
9	6		19272	50-6757
9	7	4820-01-109-4670	58818	A-12
9	8	4820-00-477-7958	75336	112C1/4 200
9	9	4820-00-849-1220	96906	MS35782-5
9	10	6685-00-425-2373	61349	050755
9	11		19272	50-6716

By Order of the Secretary of the Army:

CARL E. VUONO
General, United States Army
Chief of Staff

Official:

WILLIAM J. MEEHAN, II
Brigadier General, United States Army
The Adjutant General

DISTRIBUTION:

To be distributed in accordance with DA Form 12-25A, Unit, Direct Support and General Support Maintenance requirements for Compressor Unit, Reciprocating, Electric, 5 CFM, 175 PSI (50-6715)

RECOMMENDED CHANGES TO EQUIPMENT TECHNICAL PUBLICATIONS



THEN... JOT DOWN THE DOPE ABOUT IT ON THIS FORM. CAREFULLY TEAR IT OUT, FOLD IT AND DROP IT IN THE MAIL!

SOMETHING WRONG WITH THIS PUBLICATION?

FROM: (PRINT YOUR UNIT'S COMPLETE ADDRESS)
PFC JOHN DOE
COA, 3d ENGINEER BN
FT. L. BARNARDWOOD, MA 63108

DATE SENT

PUBLICATION NUMBER: **TM 5-4310-370-24P**
 PUBLICATION DATE: **28 August 1989**
 PUBLICATION TITLE: **COMPRESSOR UNIT, RECIPROCATING**

BE EXACT... PIN-POINT WHERE IT IS				IN THIS SPACE TELL WHAT IS WRONG AND WHAT SHOULD BE DONE ABOUT IT:
PAGE NO	PARA-GRAPH	FIGURE NO	TABLE NO	
6	2-1 a			In line 6 of paragraph 2-1 a the manual states the engine has <u>6</u> cylinders. The engine on my set only has <u>4</u> cylinders. Change the manual to show <u>4</u> cylinders.
B1		4-3		Callout 16 on figure 4-3 is pointing at a <u>bolt</u>. In key to figure 4-3, item 16 is called a <u>shim</u> - Please correct one or the other.
125	line 20			I ordered a gasket, item 19 on figure B-16 by NSN 2 910-05-762-3001. I got a gasket but it doesn't fit. Supply says I got what I ordered, so the NSN is wrong. Please give me a good NSN

PRINTED NAME, GRADE OR TITLE, AND TELEPHONE NUMBER
JOHN DOE, PFC (268) 317-7111

SIGN HERE **John - DOE**
JOHN DOE

DA FORM 2028-2
 1 JUL 79

PREVIOUS EDITIONS ARE OBSOLETE.
 DRSTS-M Overprint 1, 1 Nov 80

PS--IF YOUR OUTFIT WANTS TO KNOW ABOUT YOUR RECOMMENDATION MAKE A CARBON COPY OF THIS AND GIVE IT TO YOUR HEADQUARTERS

TEAR ALONG PERFORATED LINE

REVERSE OF DA FORM 2028-2 Reverse of DRSTS-M Overprint 2,
1 Nov 80

FILL IN YOUR
UNIT'S ADDRESS

FOLD BACK

DEPARTMENT OF THE ARMY

OFFICIAL BUSINESS

COMMANDER
U S ARMY TROOP SUPPORT COMMAND
ATTN: AMSTR-MCTS
4300 GOODFELLOW BOULEVARD
ST. LOUIS, MO 63120-1798

TEAR ALONG PERFORATED LINE

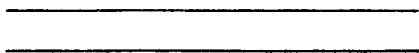
REVERSE OF DA FORM 2028-2 Reverse of DRSTS-M Overprint 2,
1 Nov 80

FILL IN YOUR
UNIT'S ADDRESS



FOLD BACK

DEPARTMENT OF THE ARMY



OFFICIAL BUSINESS

COMMANDER
U S ARMY TROOP SUPPORT COMMAND
ATTN: AMSTR-MCTS
4300 GOODFELLOW BOULEVARD
ST. LOUIS, MO 63120-1798

TEAR ALONG PERFORATED LINE

The Metric System and Equivalents

Linear Measure

1 centimeter = 10 millimeters = .39 inch
 1 decimeter = 10 centimeters = 3.94 inches
 1 meter = 10 decimeters = 39.37 inches
 1 dekameter = 10 meters = 32.8 feet
 1 hectometer = 10 dekameters = 328.08 feet
 1 kilometer = 10 hectometers = 3,280.8 feet

Weights

1 centigram = 10 milligrams = .15 grain
 1 decigram = 10 centigrams = 1.54 grains
 1 gram = 10 decigrams = .035 ounce
 1 dekagram = 10 grams = .35 ounce
 1 hectogram = 10 dekagrams = 3.52 ounces
 1 kilogram = 10 hectograms = 2.2 pounds
 1 quintal = 100 kilograms = 220.46 pounds
 1 metric ton = 10 quintals = 1.1 short tons

Liquid Measure

1 centiliter = 10 milliliters = .34 fl. ounce
 1 deciliter = 10 centiliters = 3.38 fl. ounces
 1 liter = 10 deciliters = 33.81 fl. ounces
 1 dekaliter = 10 liters = 2.64 gallons
 1 hectoliter = 10 dekaliters = 26.42 gallons
 1 kiloliter = 10 hectoliters = 264.18 gallons

Square Measure

1 sq. centimeter = 100 sq. millimeters = .155 sq. inch
 1 sq. decimeter = 100 sq. centimeters = 15.5 sq. inches
 1 sq. meter (centare) = 100 sq. decimeters = 10.76 sq. feet
 1 sq. dekameter (are) = 100 sq. meters = 1,076.4 sq. feet
 1 sq. hectometer (hectare) = 100 sq. dekameters = 2.47 acres
 1 sq. kilometer = 100 sq. hectometers = .386 sq. mile

Cubic Measure

1 cu. centimeter = 1000 cu. millimeters = .06 cu. inch
 1 cu. decimeter = 1000 cu. centimeters = 61.02 cu. inches
 1 cu. meter = 1000 cu. decimeters = 35.31 feet

Approximate Conversion Factors

<i>To change</i>	<i>To</i>	<i>Multiply by</i>	<i>To change</i>	<i>To</i>	<i>Multiply by</i>
inches	centimeters	2.540	ounce-inches	newton-meters	.007062
feet	meters	.305	centimeters	inches	.394
yards	meters	.914	meters	feet	3.280
miles	kilometers	1.609	meters	yards	1.094
square inches	square centimeters	6.451	kilometers	miles	.621
square feet	square meters	.093	square centimeters	square inches	.155
square yards	square meters	.836	square meters	square feet	10.764
square miles	square kilometers	2.590	square meters	square yards	1.196
acres	square hectometers	.405	square kilometers	square miles	.386
cubic feet	cubic meters	.028	square hectometers	acres	2.471
cubic yards	cubic meters	.765	cubic meters	cubic feet	35.315
fluid ounces	milliliters	29.573	cubic meters	cubic yards	1.308
pints	liters	.473	milliliters	fluid ounces	.034
quarts	liters	.946	liters	pints	2.113
gallons	liters	3.785	liters	quarts	1.057
ounces	grams	28.349	liters	gallons	.264
pounds	kilograms	.454	grams	ounces	.035
short tons	metric tons	.907	kilograms	pounds	2.205
pound-feet	newton-meters	1.356	metric tons	short tons	1.102
pound-inches	newton-meters	.11296			

Temperature (Exact)

°F	Fahrenheit temperature	5/9 (after subtracting 32)	Celsius temperature	°C
----	------------------------	----------------------------	---------------------	----

TM 5-4310-370-24P

PIN: 049933-002